

# DSC-RX1/RX1R

# SERVICE MANUAL

**Ver. 1.0 2013.06**



Photo: DSC-RX1

## LEVEL 2

US Model  
Canadian Model  
AEP Model  
E Model  
Chinese Model  
Japanese Model

**SERVICE NOTE (Check the following note before the service.)**



NZNEEDPA - Fri, 11 Jul 2025 02:37:34 GMT


**Note:** This manual contains information of the DSC-RX1 Service Manual (9-834-697-[]) and additional DSC-RX1R information.

**Note:** このマニュアルはDSC-RX1のサービスマニュアル(9-834-697-□□)にDSC-RX1Rの情報を追加したものです。

# DIGITAL STILL CAMERA

**SONY®**

The components identified by mark  or dotted line with mark  are critical for safety. Replace only with part number specified.

Les composants identifiés par une marque  sont critiques pour la sécurité.  
Ne les remplacer que par une pièce portant le numéro spécifié.

## Revision History

Ver.	Date	History	Contents	S.M. Rev. issued
1.0	2013.06	Official Release	—	—



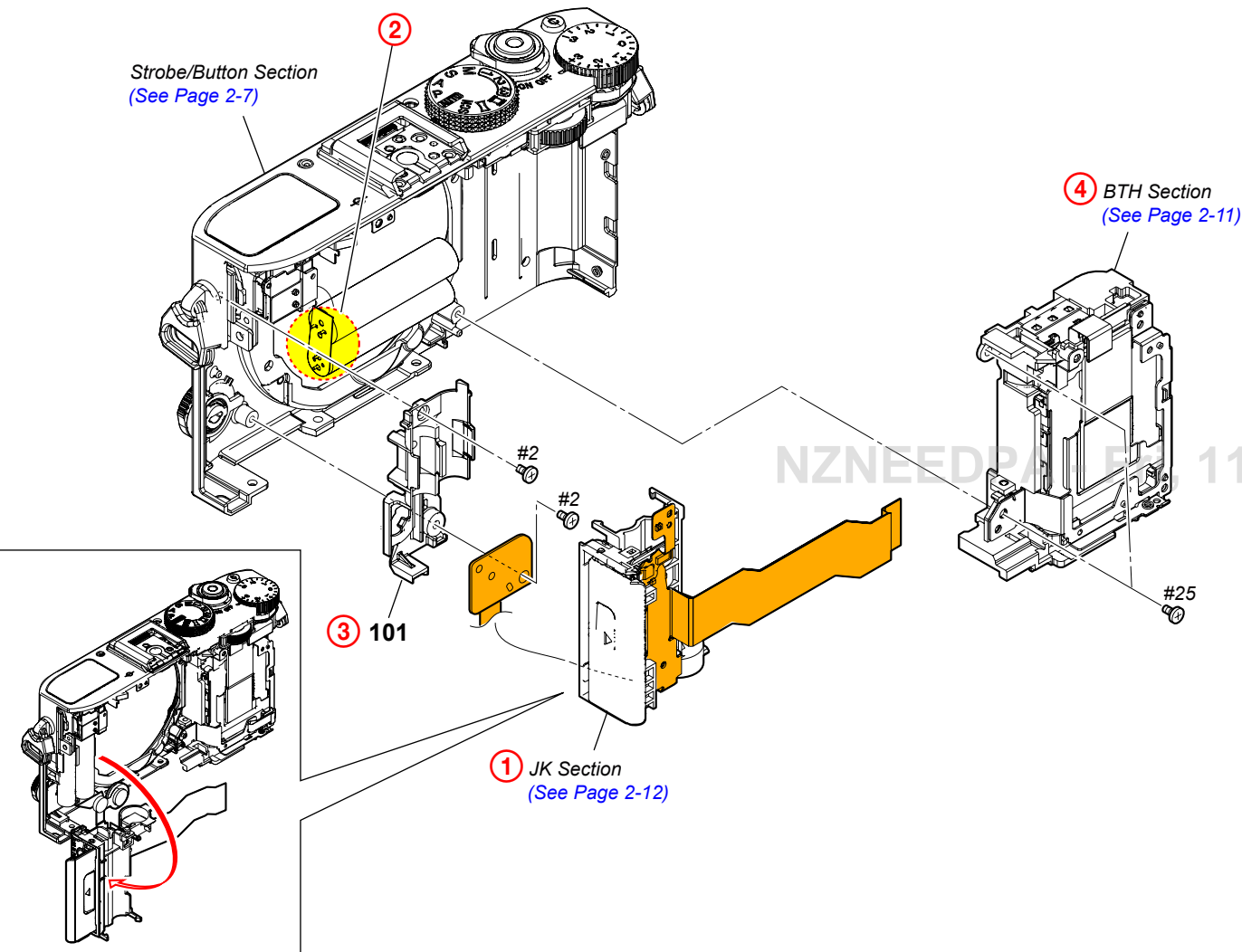








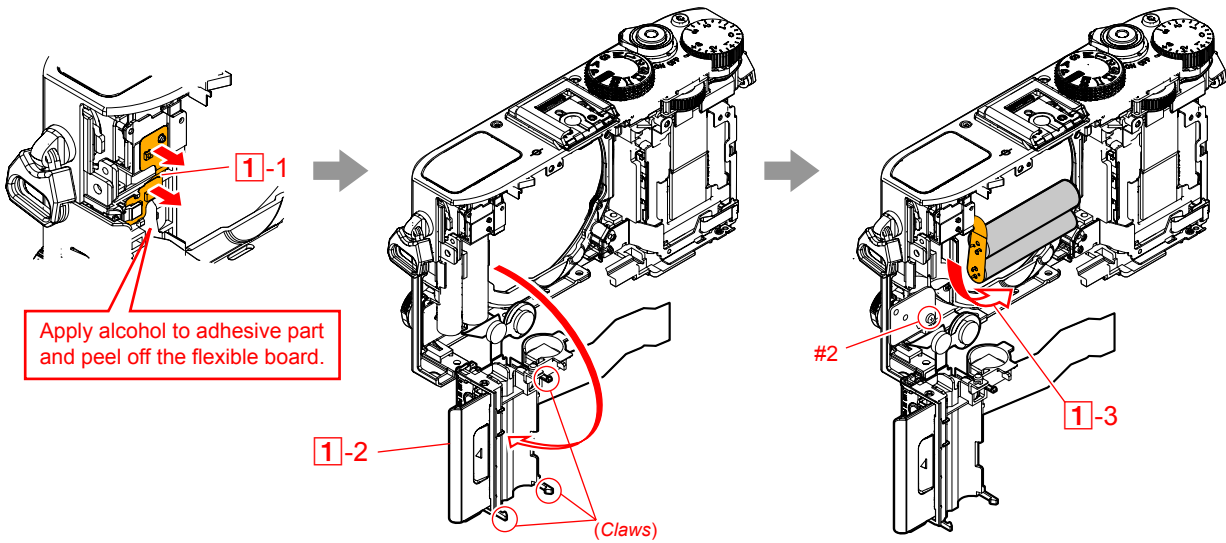
2-1-3. BTH/JK SECTION



DISASSEMBLY

1. Remove in numerical order (1 to 4) in the left figure.

① Peel off the Flexible Board (1-1) → Open the JK Section (1-2) → Open the Condensers (1-3) → #2 X 1

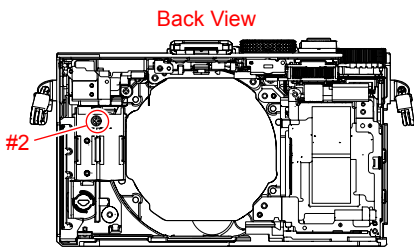


②

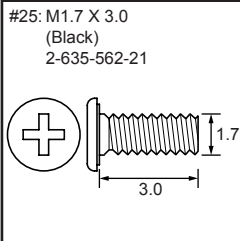
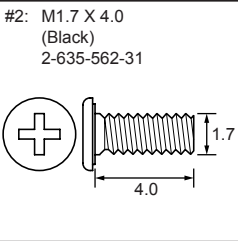
DISCHARGING OF THE CHARGING CAPACITOR

ストロボ用充電コンデンサの放電

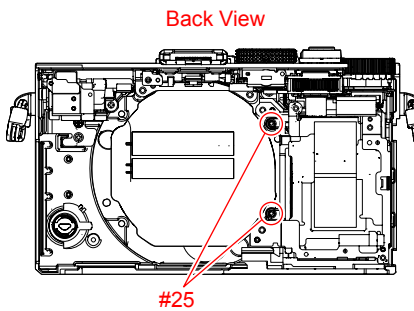
③ #2X 1



Screw

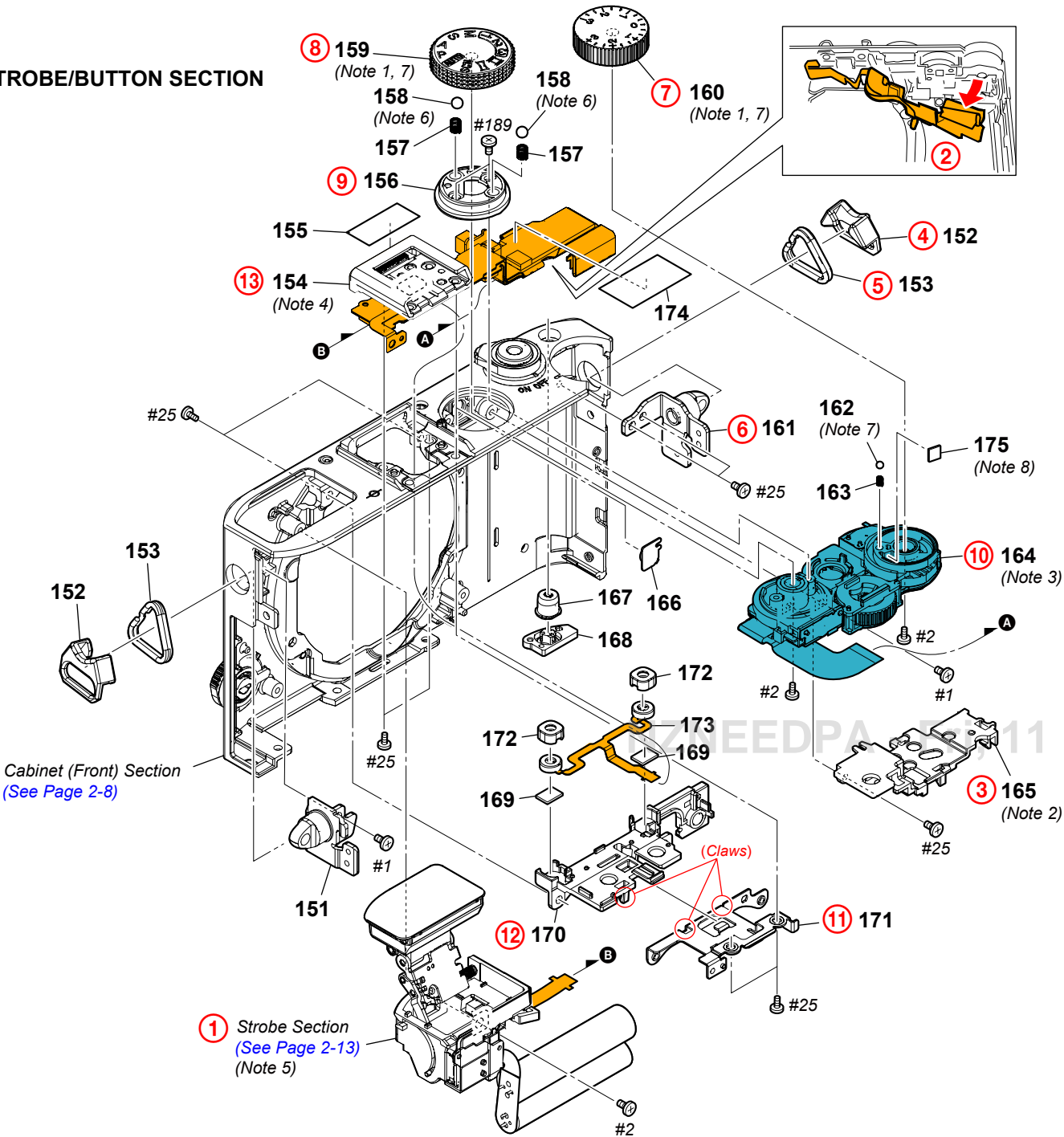


④ #25 X 2





2-1-4. STROBE/BUTTON SECTION



DISASSEMBLY

1. Remove in numerical order (① to ⑬) in the left figure.

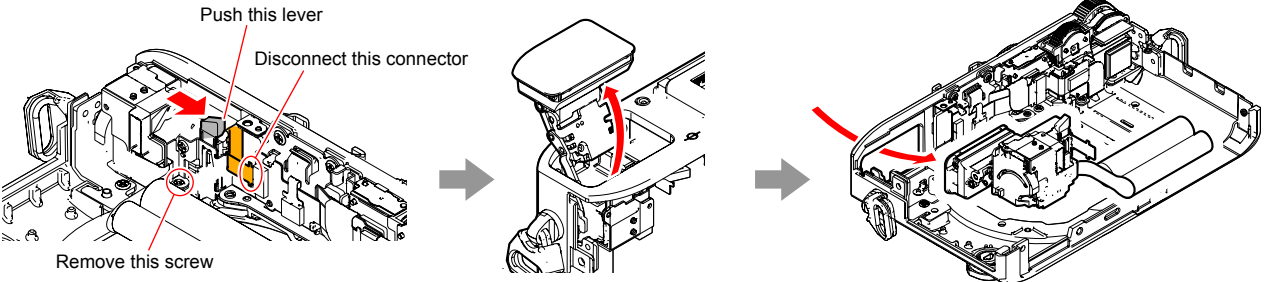
Screw

#1: M1.7 X 2.5 (Black) 2-635-562-11	#2: M1.7 X 4.0 (Black) 2-635-562-31	#25: M1.7 X 3.0 (Black) 2-635-562-21	#189: M1.4 X 3.5 (Tapping) (Silver) 3-686-458-21

Note

<b>Note 1:</b> Refer to "Assembly-3: Notes on Assembling the E Dial and M Dial." when you assemble.	<b>Note 1:</b> 組立時は"Assembly-3: Notes on Assembling the E Dial and M Dial."を参照してください。
<b>Note 2:</b> Refer to "Assembly-2: Notes on Assembling the II-2001 Flexible Board." when you assemble.	<b>Note 2:</b> 組立時は"Assembly-2: Notes on Assembling the II-2001 Flexible Board."を参照してください。
<b>Note 3:</b> Refer to "Assembly-4: Notes on Assembling the Control Switch Block." when you assemble.	<b>Note 3:</b> 組立時は"Assembly-4: Notes on Assembling the Control Switch Block."を参照してください。
<b>Note 4:</b> Refer to "Assembly-5: How to fold the II-2001 Flexible Board." when you assemble.	<b>Note 4:</b> 組立時は"Assembly-5: How to fold the II-2001 Flexible Board."を参照してください。

**Note 5:** How to remove the strobe section.

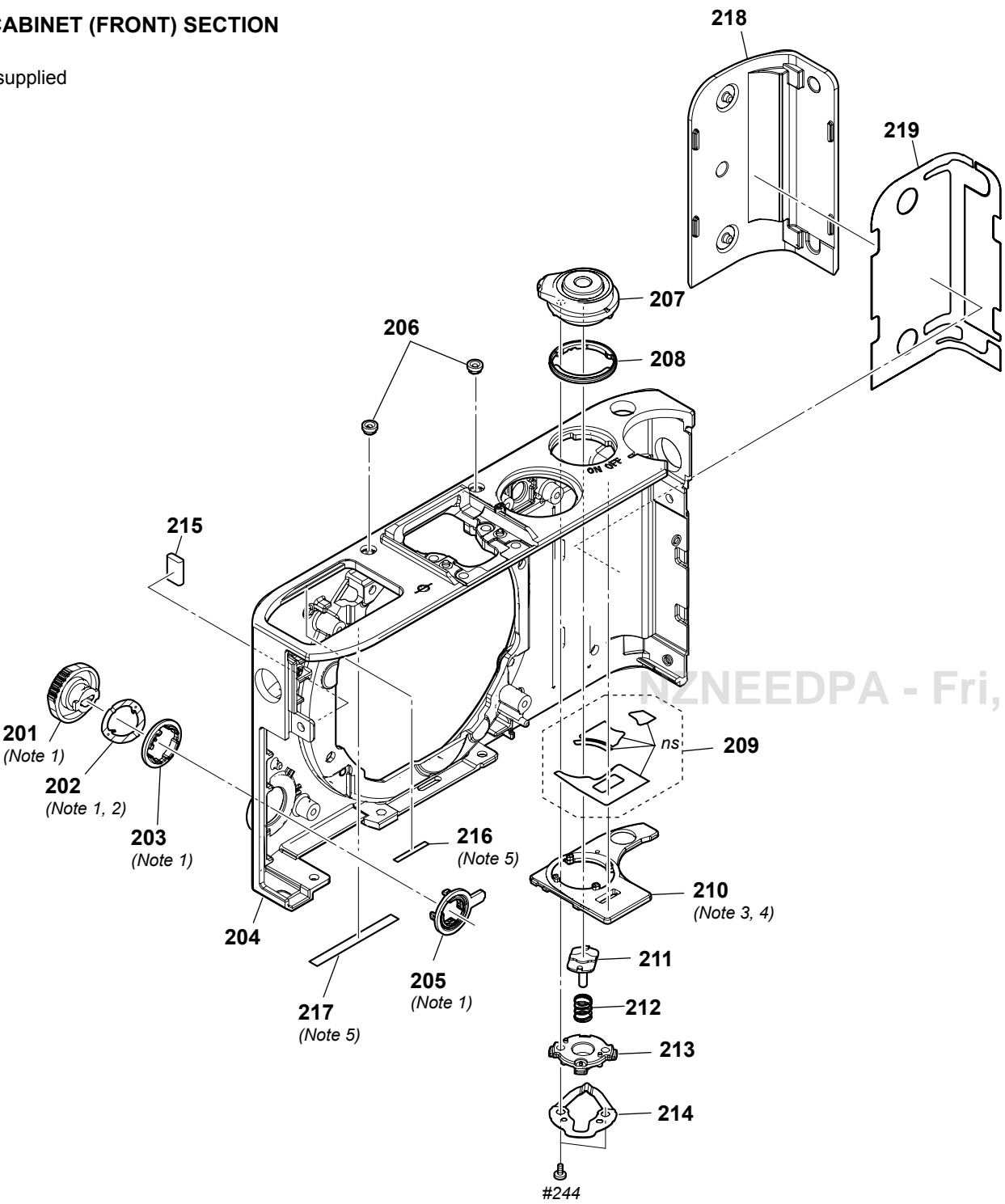


<b>Note 6:</b> The BALL, STEEL ASSY (SERVICE) is supplied with the certain grease applied to STEEL BALL (Ref. No. 158) . When replacing steel balls, replace them the certain grease applied.	<b>Note 6:</b> BALL, STEEL ASSY (SERVICE) は STEEL BALL (Ref. No. 158) に特定グリスが塗布された状態で供給されます。スチールボールを交換する際は、特定グリスが塗布されたまま交換してください。
<b>Note 7:</b> When replacing the M DIAL, the E DIAL or the STEEL BALL (Ref. No. 162) apply the certain grease supplied with the BALL, STEEL ASSY (SERVICE) (A-1911-422-A) and replace them.	<b>Note 7:</b> M DIAL, E DIALまたはSTEEL BALL (Ref. No. 162) を交換する場合は、BALL, STEEL ASSY (SERVICE) (A-1911-422-A) に含まれている特定グリスを塗布して交換してください。
<b>Note 8:</b> These sheets may not be stuck to the unit.	<b>Note 8:</b> これらのシートは、本機に貼られていない場合があります。

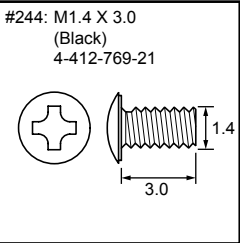


2-1-5. CABINET (FRONT) SECTION

ns : not supplied



Screw

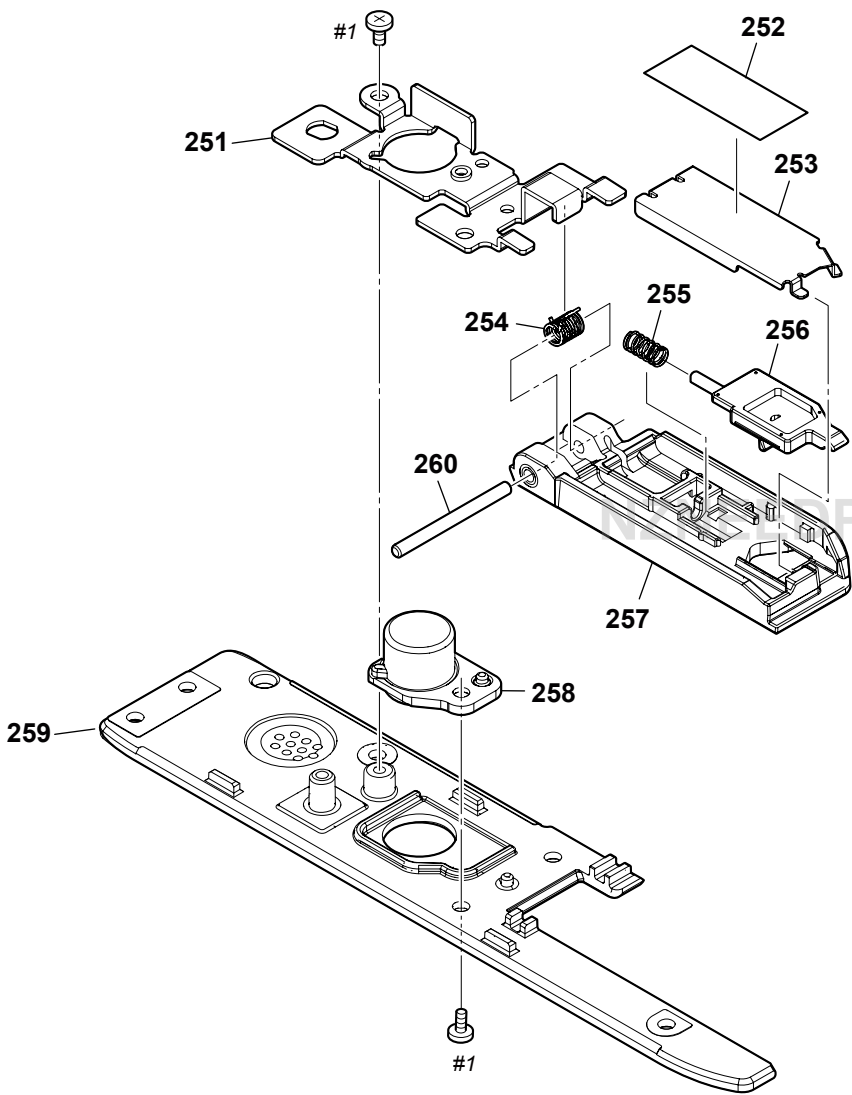


Note

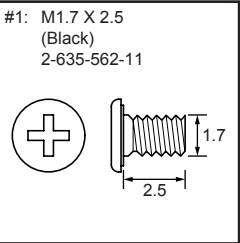
- |   |   |
|---|---|
| <b>Note 1:</b> Refer to "Assembly-6: Notes on Assembling the FM Dial." when you assemble.   | <b>Note 1:</b> 組立時は"Assembly-6: Notes on Assembling the FM Dial."を参照してください。   |
| <b>Note 2:</b> Grease is applied to the FM SHEET METAL. If insufficient amount of grease is applied in the disassembly or assembly process, apply the dedicated grease supplied with the BALL, STEEL ASSY (SERVICE) (A-1911-422-A) before assembling. | <b>Note 2:</b> FM SHEET METAL にはグリスが塗布されています。分解、組立て時にグリスの塗布量が不足していた場合は、BALL, STEEL ASSY (SERVICE) (A-1911-422-A) に含まれている特定グリスを塗布してから組立ててください。 |
| <b>Note 3:</b> Refer to "Assembly-7: Notes on Assembling the Top Inner." when you assemble.   | <b>Note 3:</b> 組立時は "Assembly-7: Notes on Assembling the Top Inner."を参照してください。  |
| <b>Note 4:</b> When replacing the TOP INNER, apply the certain grease supplied with the BALL, STEEL ASSY (SERVICE) (A-1911-422-A) and replace the TOP INNER.  | <b>Note 4:</b> TOP INNERを交換する場合は、BALL, STEEL ASSY (SERVICE) (A-1911-422-A) に含まれている特定グリスを塗布して交換してください。   |
| <b>Note 5:</b> These sheets may not be stuck to the unit.   | <b>Note 5:</b> これらのシートは、本機に貼られていない場合もあります。  |



2-1-6. CABINET (BOTTOM) SECTION

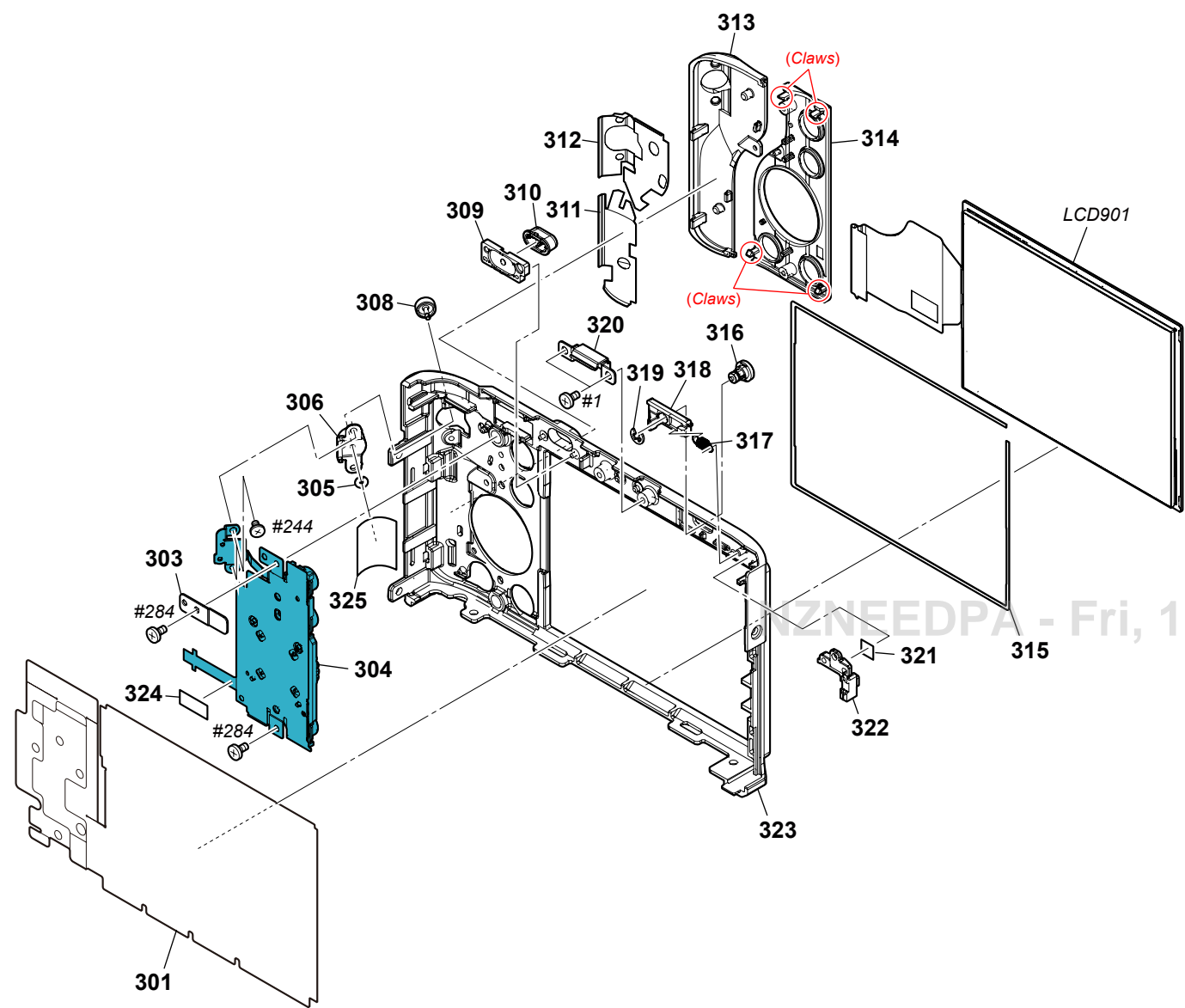


Screw





2-1-7. CABINET (REAR) SECTION

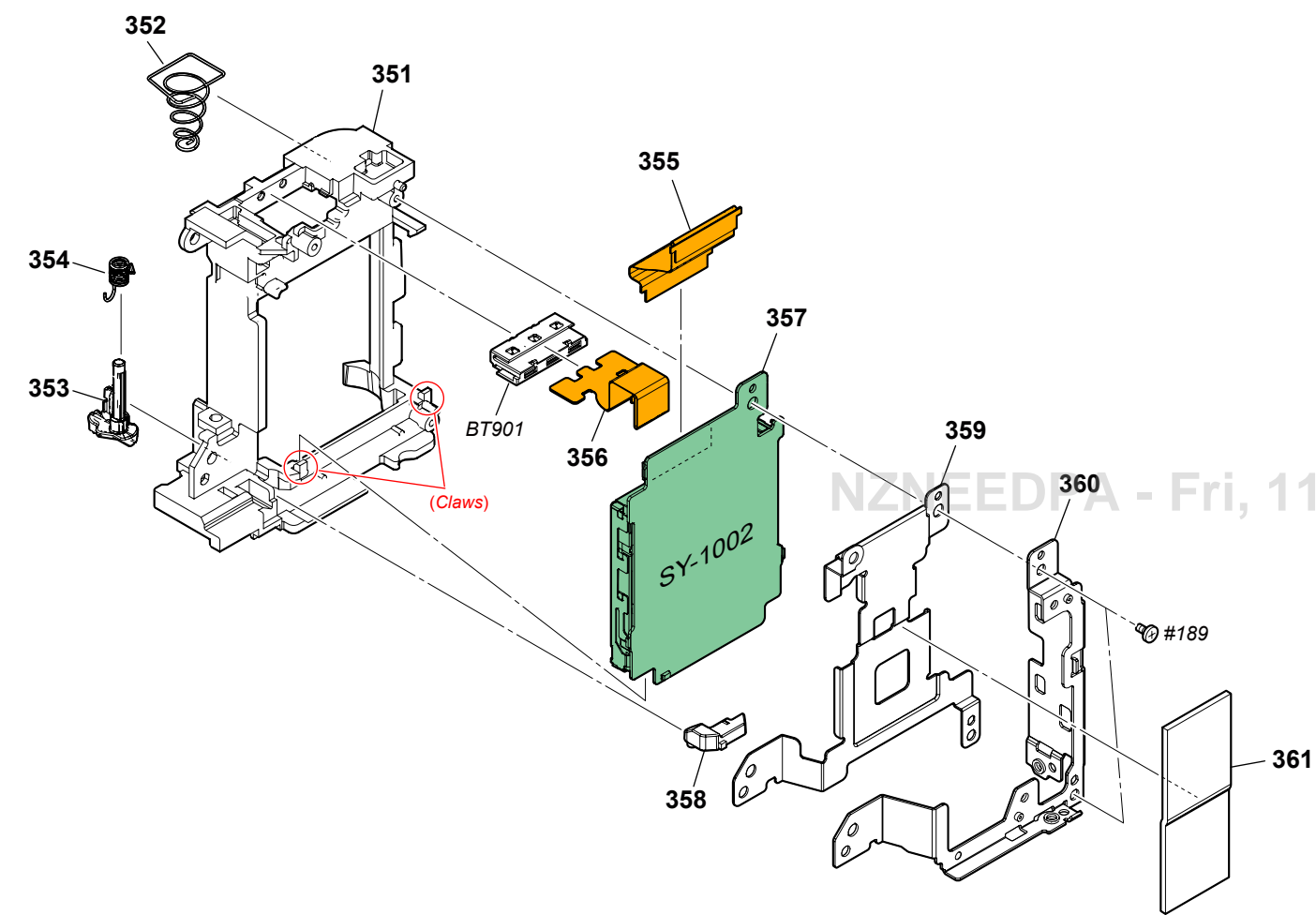


Screw

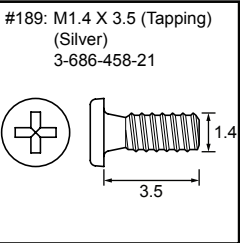
#1: M1.7 X 2.5 (Black) 2-635-562-11	#244: M1.4 X 3.0 (Black) 4-412-769-21	#284: M1.4 X 3.0 (Tapping) (Black) 4-433-882-21



2-1-8. BTH SECTION

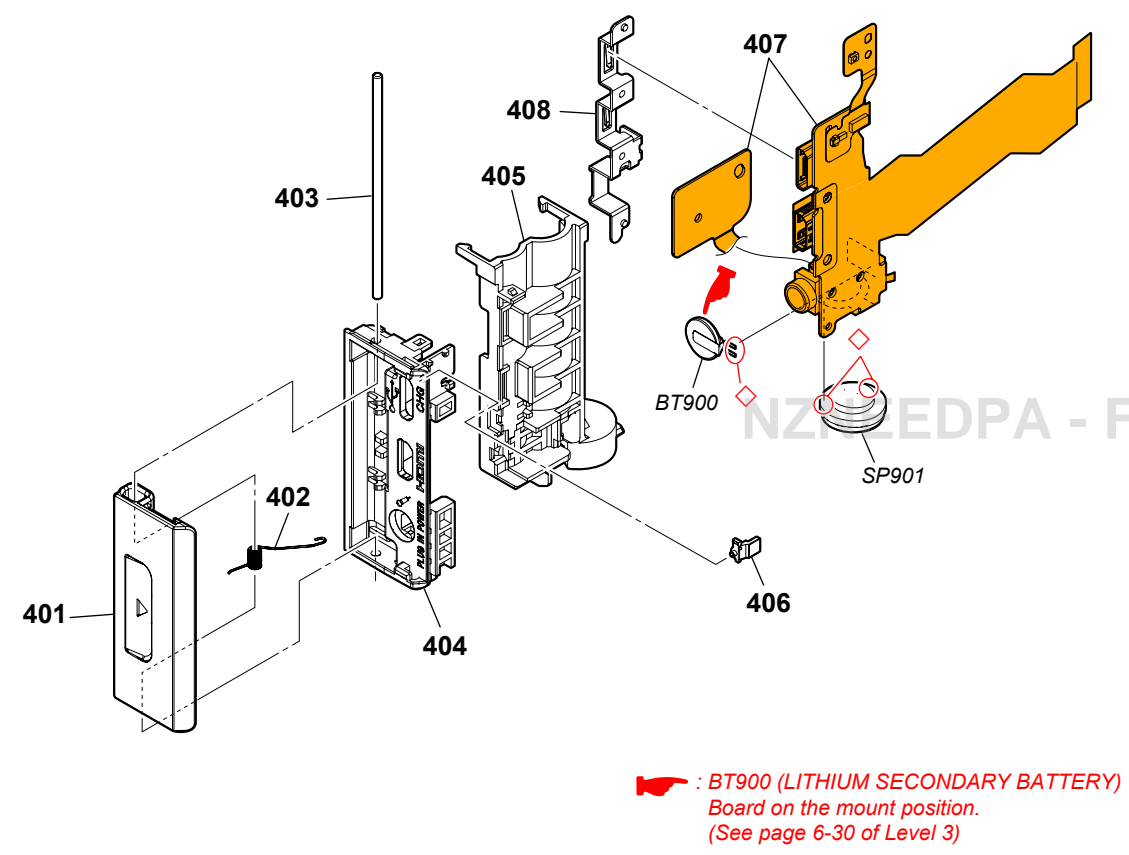


Screw





2-1-9. JK SECTION



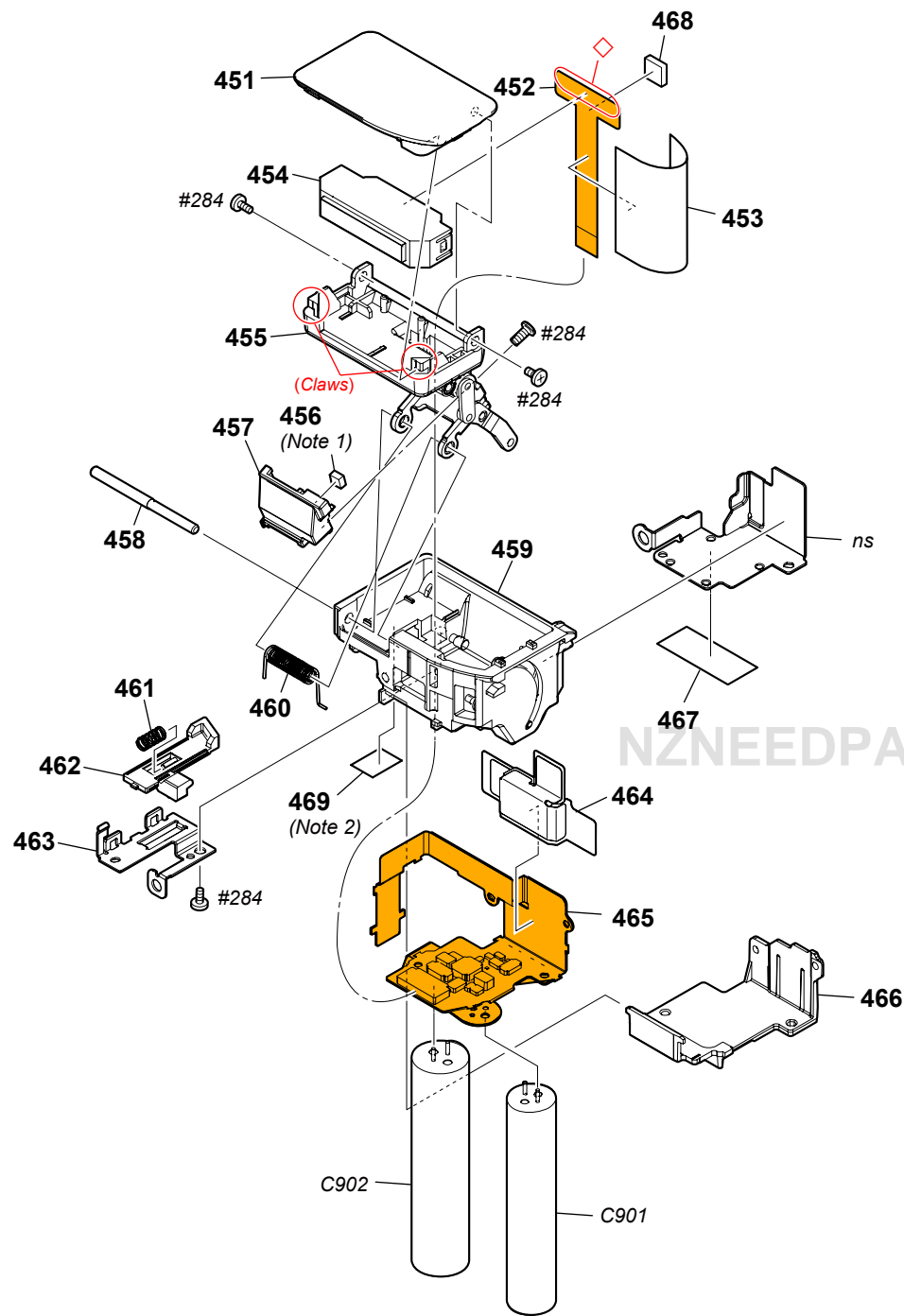
DISASSEMBLY

- 1. The meaning of the symbol in left figure is as follows. Be careful when you remove it.  
◇-X: Solder



2-1-10. STROBE SECTION

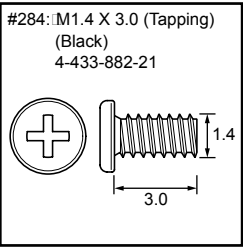
ns : not supplied



DISASSEMBLY

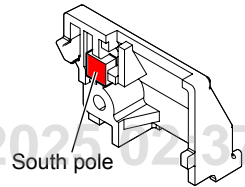
1. The meaning of the symbol in left figure is as follows. Be careful when you remove it.  
◇-X: Solder

Screw

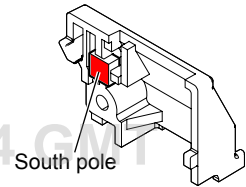


Note

**Note 1:**  
When attaching a magnet, attach it with its south (S) pole coming to the front side.



**Note 1:**  
マグネットを取付ける際は、S極が手前側になるように取り付けてください。



**Note 2:** These sheets may not be stuck to the unit.

**Note 2:** これらのシートは、本機に貼られていない場合もあります。